



UNIONE EUROPEA
Fondi Strutturali e di Investimento Europei

Strategies & tools to support Social Innovation in NOP Metropolitan Cities 2014-2020

Teresa Capece Galeota

*Managing Authority Staff
Italian Agency for Territorial Cohesion*

September 20, 2018 - *OIS- Open Innovation Summit - Turin*



A National multi – fund **Programme** (ERDF + ESF) which:

- Aimis at improving the quality of services and promoting social inclusion by the direct involvement of **14 Metropolitan cities** (*Intermediate bodies*)
- *Is managed at **Central Level** (a Managing Authority is designated within the Italian Agency for Territorial Cohesion)*
- represents a **unique example** within the current programming period of a partnership bringing together a wide range of cities
- Is entirely addressed to **sustainable urban development**

Programme overview



Razionale for a Metropolitan Cities Programme

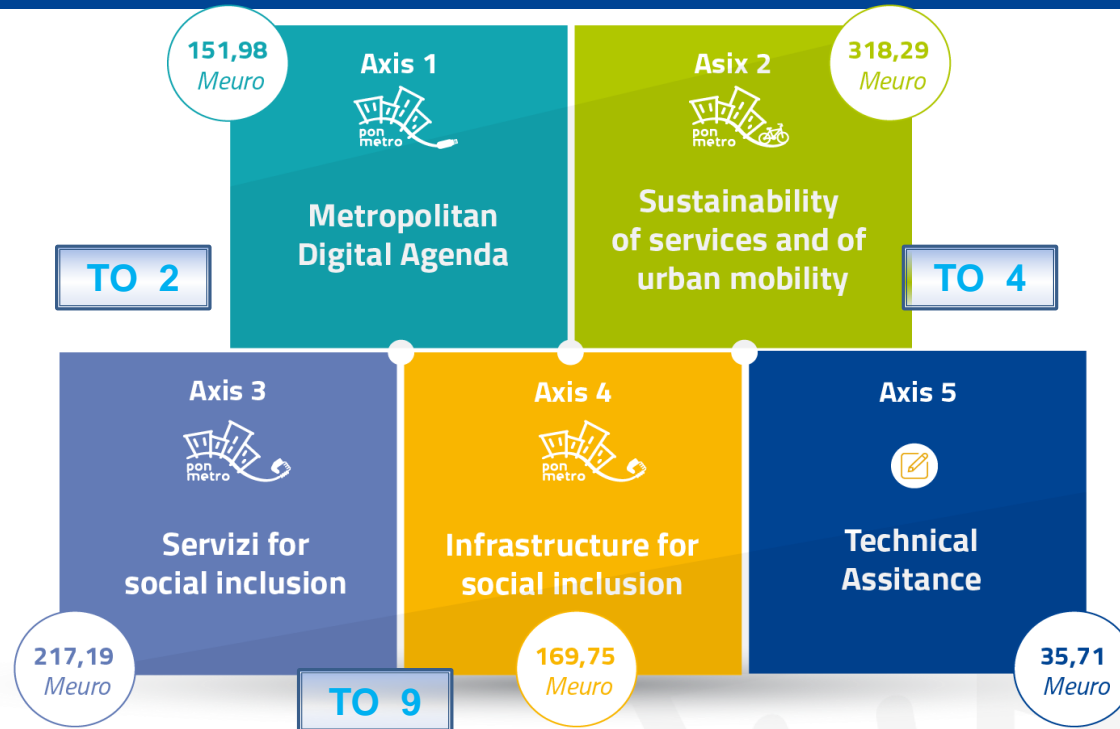
*Europe 2020 's challenges for urban context: reducing emissions, saving energy, **reducing poverty***

The importance of the City's role and obligation to devote 5% of ERDF resources to the Urban Agenda for funding **projects on sustainable urban development**

The **National Urban Agenda** provides **three drivers** addressed to strengthening public services, **social inclusion** and economic growth



NOP Metro



Priorities and resources

*NOP Metro has a total budget of 892 Million Euros (588 ERDF - 304 ESF), differently allocated at local level: about 90 Million Euros to each Metropolitan City belonging to **Less developed Regions (Southern Italy)** and about 40 Million Euros to each Metropolitan City in **More developed regions and Transition Regions (Northern Italy and Sardinia)***

Governance

1 - Defining Urban Strategy

Needs assessment; Accordance with Sectoral Plans and Strategies; Defining goals and targets; Participatory process; Demarcation & complementary with other Programs

2 – Adoption of delegated Act

Defining duties and functions of each Urban Authority related to the planning and implementing process

3 – Planning process and initiating operations

Selection of operations (eligibility criteria, evaluation, rewarding performance); responsibility for the implementation process and sound financial management of interventions; electronic exchange of data....



Social inclusion in NOP Metro: public services (in) public infrastructures 1/2

Specific objectives of Axis 3 & 4:

- Reduction in the number of families and individuals in socioeconomic disadvantage and housing deprivation
- Extreme poverty reduction and inclusion of homeless and marginalized communities
- Increase of legality and improve the socio – economic urban context in areas at the highest risk of social exclusion

Expected results Axis 3 and 4



Recovering 35.600
square meters
from unused properties

2.270 accommodation for families in
uncomfortable condition



services and assistance
for about 2.000 homeless

10.000 path
accompanying to living



The new paradigm of social Innovation

Although already included in the 2007 2013 Programming period, Social Innovation has been integrated in the Structural and investment funds for 2014 – 2020, thus giving Member States the opportunity to **invest in Social Innovation**

Through both ERDF and ESF - NOP Metro supports Social Innovation to stimulate civil society and social entrepreneurs, **calling for new ideas** (services, patterns, solutions) that:

- would better suit and satisfy Citizens' needs – in an inclusive way - if compared to the existing ones (public provision of Services);
- bring to new relations and partnerships among Third sector operators

Social Inclusion into practice

Social Inclusion projects in the Cities' Action Plans: (Axis 3 - Services for Social Inclusion -ESF):

- Multi – disciplinary paths to promote access to housing of an adequate standard for vulnerable groups;
- Low threshold services for homeless, including migrants
- Promotion of community welfare;
- Supporto to social entrepreneurship for the development of innovative services;

.....And Social innovation into practice 1/2

What goes on within Action 3.3.1 (Community welfare):

- Collaborative welfare in peripheral area
- Microcredit for disadvantaged categories for the creation of new proximity services and associated network's and experiences of self-employment
- Cultural activities of territorial civic collaboration
- Civic crowd – funding platform for stimulating new forms of crowdfunding

.....And Social innovation into practice 2/2

What goes on within Action 3.3.1 (Support to social Entrepreneurship for the development of innovative services):

- Support for the development of innovative services and coaching for the promotion of micro-entrepreneurial activities
- Support for the creation of social start-ups,
- Set up of incubators to create and offer innovative services for local communities

The role of Municipalities in NOP Metro

As a provider of innovative social services:

- buying services in the market
- stimulating new partnerships with (and among) third sectors organizations

As an innovation facilitator

- Creating conditions for ensuring that innovation in services is implemented in the public interest

NOP Metropolitan Cities 2014 – 2020:

***Cities in 2014 – Innovative solutions
& coordinated efforts
for a Europe closer to citizens
with smarter, greener, more connected & Social Cities***

Thank you for your attention!

for information:

teresa.capecegaleota@agenziacoesione.gov.it

anna.bonaduce.esp@agenziacoesione.gov.it

elisa.bianchi.esp@agenziacoesione.gov.it

adgponmetro14-20@agenziacoesione.gov.it

www.agenziacoesione.gov.it